

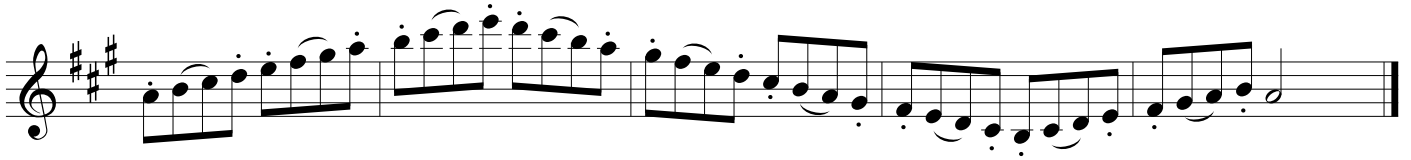
Major Scales With Articulation Patterns-Examples

Saxophone

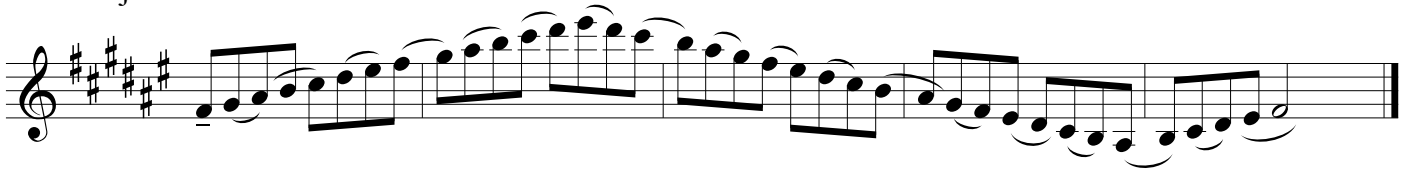
E♭ Major-Slur Two/Tongue Two



A Major-Tongue One/Slur Two/ Tongue One

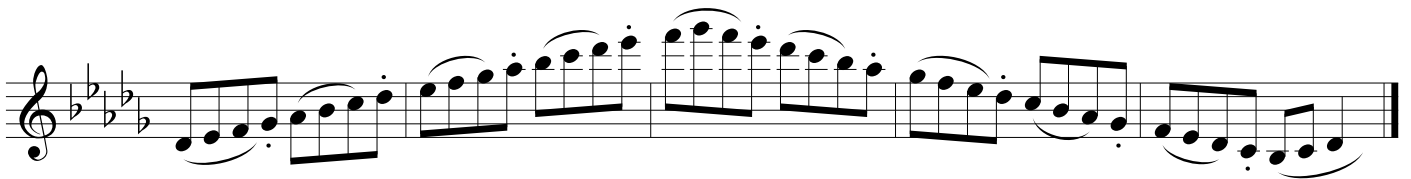


F# Major-"Jazz Articulation"



***Note-Saxophonists with a high F# key should play scales and chords up to high F#**

D♭ Major-Slur Three/Tongue One (with high F#)



B Major-Tongue Two/Slur Two (with high F#)

