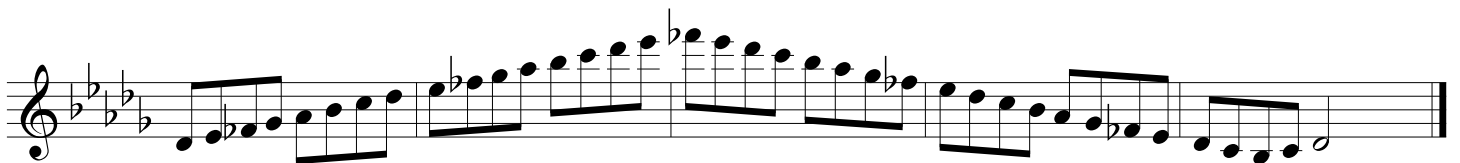
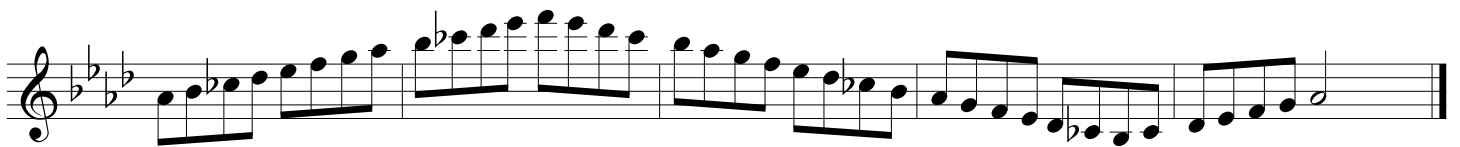
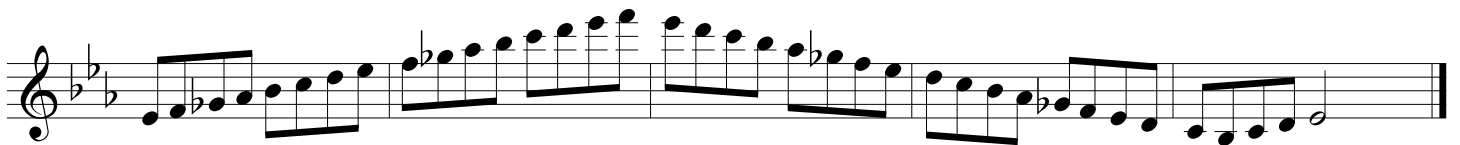
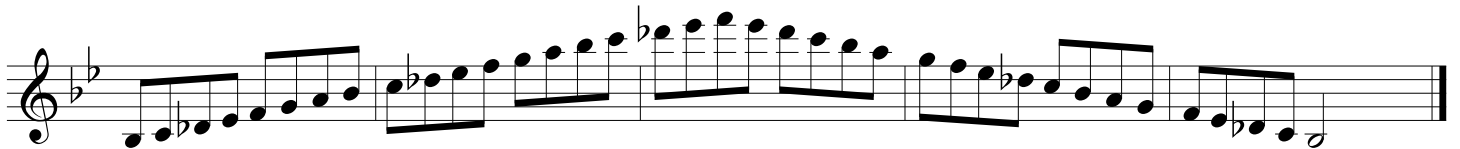
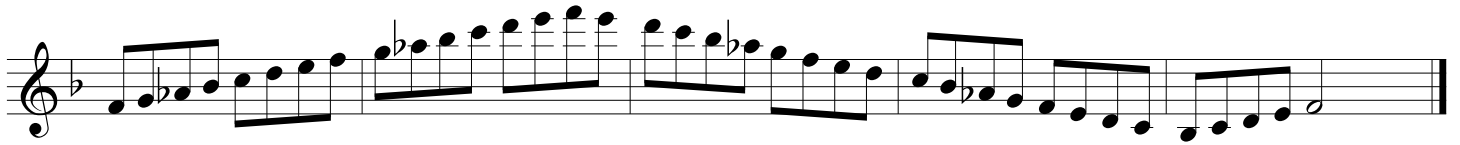
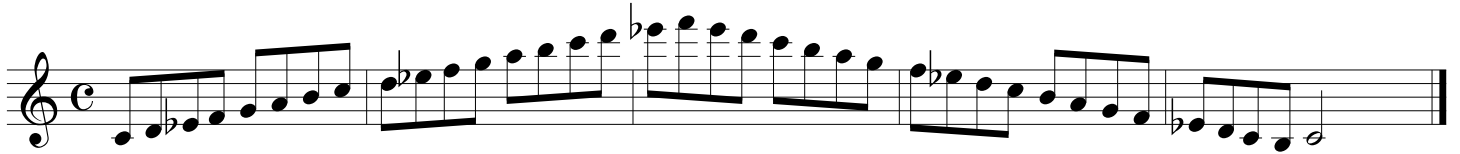
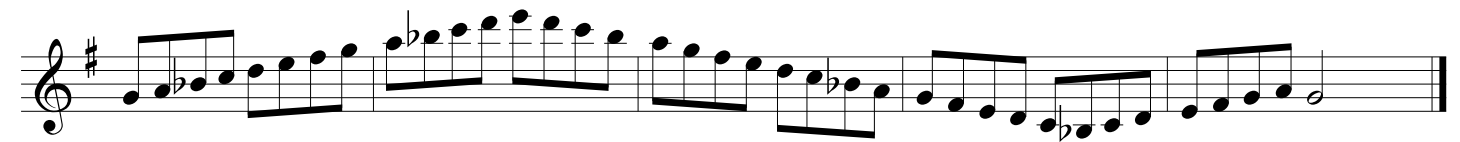
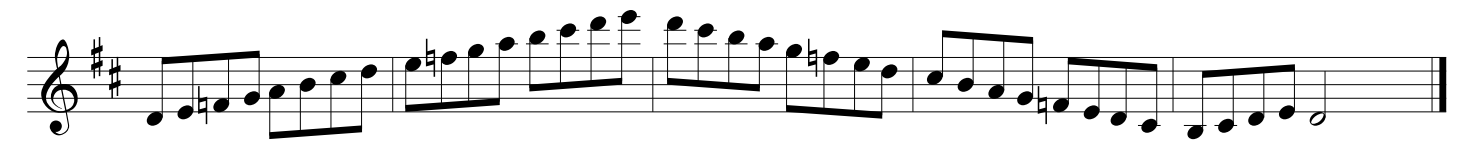
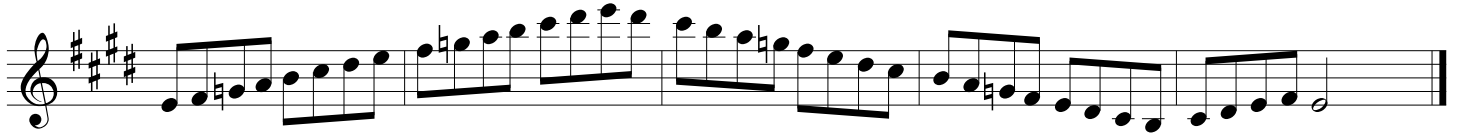


Real Melodic Minor Scales

Full Range (Saxophone)

Also known as "Jazz Minor," the real melodic minor scale is equivalent to a major scale with a flatted 3rd. Unlike the "classical" melodic minor, this scale is the same ascending and descending.





***Note-Don't forget to apply articulation patterns to the scales .
Saxophonists with high F# key should play up to F# where possible.**