

Cycles(Root Progressions)

1. Half Steps (up or down) = Chromatic Scale



2. Whole Steps (up or down) = Whole Tone Scale (two possible scales)



3. Minor Thirds (up or down) = Diminished Seventh Chord (three possible chords)

*The diminished chords have not been spelled correctly, but have been given the simplest enharmonic spellings.

C ,Eb(D#), Gb(F#) and A dim. seventh chords C#(Db), E, G and A#(Bb) dim. seventh chords D, F, G#(Ab) and B(Cb) dim. seventh chords



4. Major Thirds (up or down) = Augmented Triad (four possible chords)

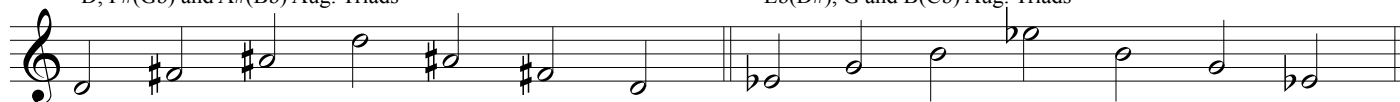
C, E and G#(Ab) Aug. Triads

Db(C#), F and A Aug. Triads



D, F#(Gb) and A#(Bb) Aug. Triads

Eb(D#), G and B(Cb) Aug. Triads



5. Cycle of Fifths

